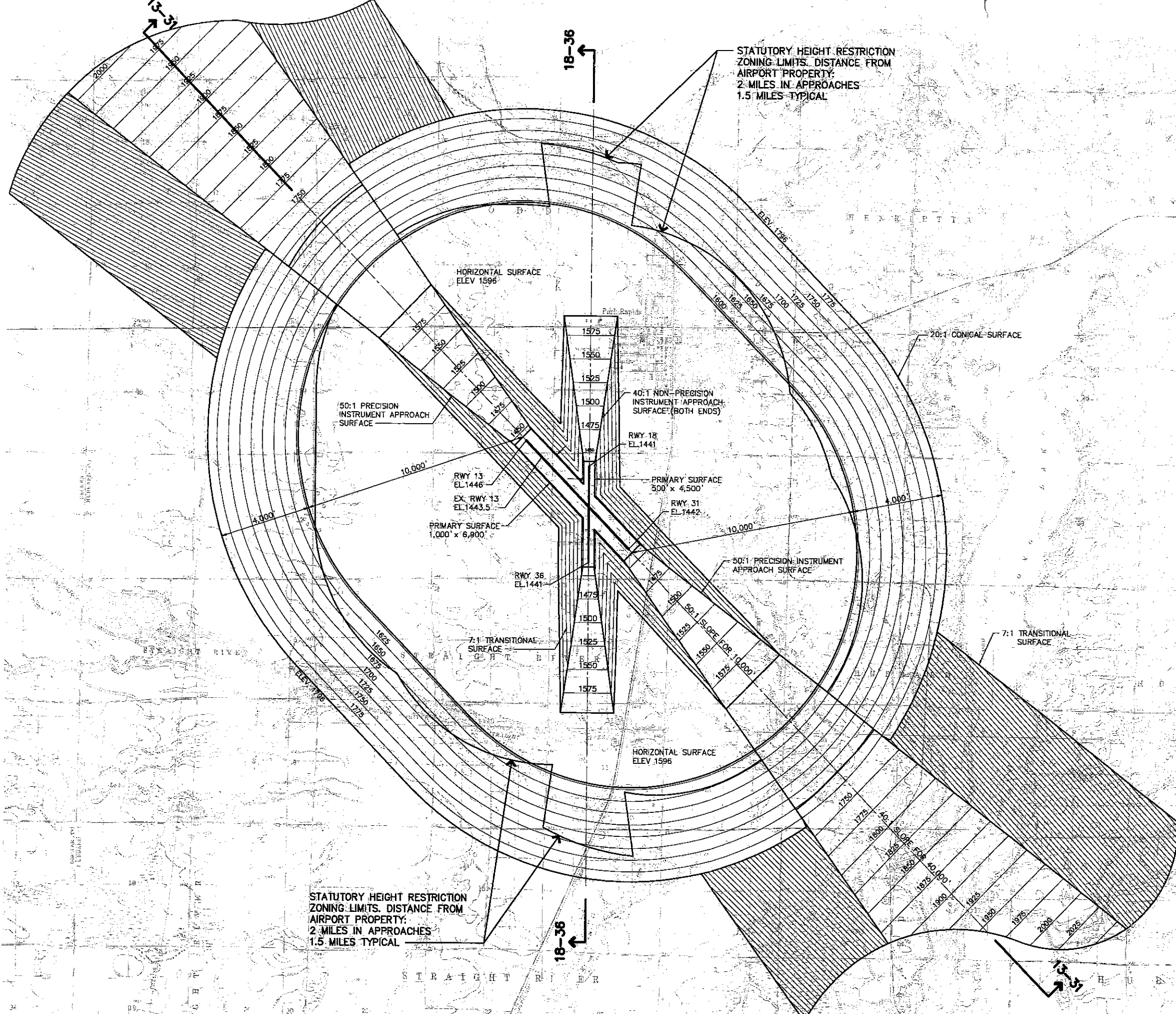


STATUTORY HEIGHT RESTRICTION ZONING LIMITS. DISTANCE FROM AIRPORT PROPERTY:
2 MILES IN APPROACHES
1.5 MILES TYPICAL



ULTIMATE APPROACH SURFACE DIMENSIONS			
RUNWAY	INNER WIDTH*	LENGTH	OUTER WIDTH
13	1,000'	50,000'	16,000'
31	1,000'	50,000'	16,000'
18	500'	10,000'	3,500'
36	500'	10,000'	3,500'

* DIMENSIONS GIVEN ARE THE SAME FOR THE PRIMARY SURFACE WIDTH.

NOTES:

- ALL ELEVATIONS ARE IN FEET ABOVE MEAN SEA LEVEL.
- ESTABLISHED AIRPORT ELEVATION 1446 M.S.L.
- IMAGINARY SURFACE DIMENSIONS SHOWN ARE FAA AND MnDOT CRITERIA.
- THE AERIAL CONTOURS ILLUSTRATE THE HEIGHT LIMITATIONS WITHIN EACH ZONE.
- ZONING APPLIES TO AREAS UNDERLYING THE IMAGINARY SURFACE BOUNDARIES.
- A SLOPE SUCH AS 40:1 EXPRESSES THE HORIZONTAL DISTANCE OF 40' TO THE VERTICAL DISTANCE OF 1'.

LEGEND

- RUNWAY
- ZONE BOUNDARY
- HEIGHT RESTRICTION ZONING LIMITS
- AERIAL CONTOURS

BASEMAP: USGS 7.5 MINUTE SERIES
CURRENT: DORSET - 1970
HUNTERSVILLE - 1970
MENAHA - 1969
PARK RAPIDS - 1969
PARK RAPIDS NW - 1969
PARK RAPIDS SW - 1969

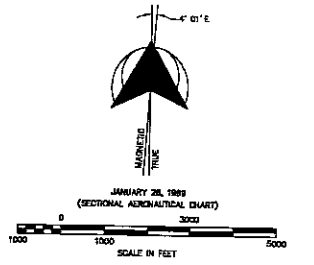
NOTE: USGS BASE MAP IS A PICTORIAL REPRESENTATION AND IS NOT TIED TO COORDINATE SYSTEM OF AIRPORT.

PARK RAPIDS MUNICIPAL AIRPORT
PARK RAPIDS, MINNESOTA
AIRPORT ZONING ORDINANCE
AIRSPACE ZONING MAP

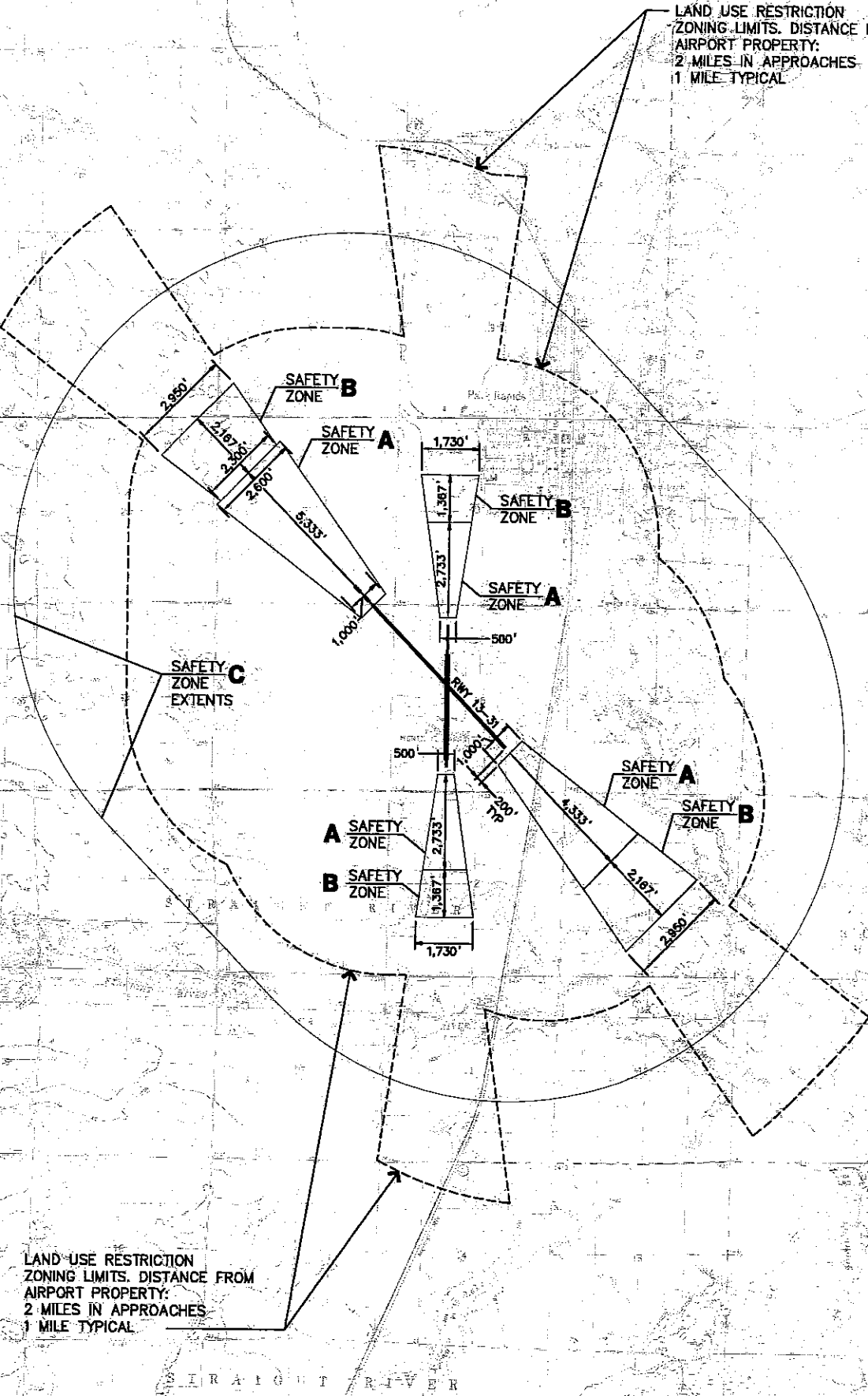
THE CITY OF

TKDA

Sheet



LAND USE RESTRICTION
ZONING LIMITS. DISTANCE FROM
AIRPORT PROPERTY:
2 MILES IN APPROACHES
1 MILE TYPICAL



LAND-USE RESTRICTION
ZONING LIMITS. DISTANCE FROM
AIRPORT PROPERTY:
2 MILES IN APPROACHES
1 MILE TYPICAL

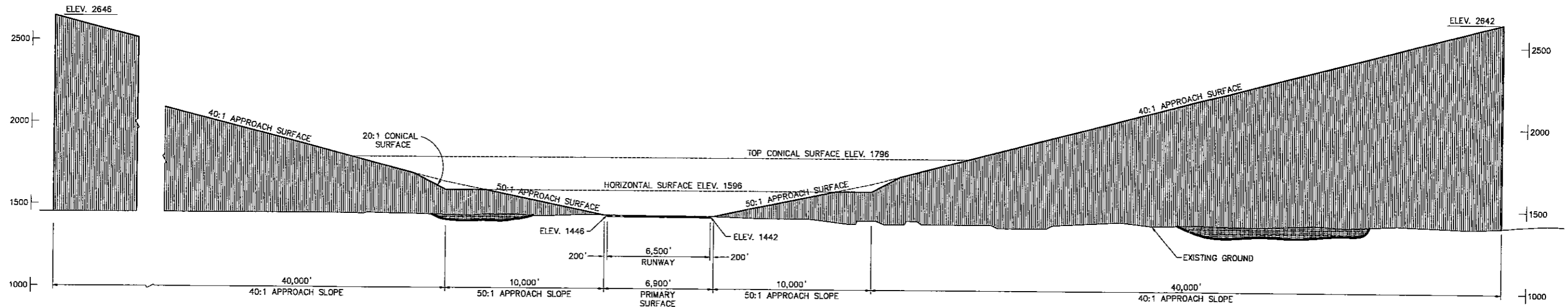
- BASEMAP: USGS 7.5 MINUTE SERIES
- CURRENT: DORSET - 1970
- HUNTERSVILLE - 1970
- MENAHGA - 1969
- PARK RAPIDS - 1969
- PARK RAPIDS NW - 1969
- PARK RAPIDS SW - 1969

NOTE: USGS BASE MAP IS A PICTORIAL REPRESENTATION
AND IS NOT TIED TO COORDINATE SYSTEM OF AIRPORT.

PARK RAPIDS MUNICIPAL AIRPORT
PARK RAPIDS, MINNESOTA

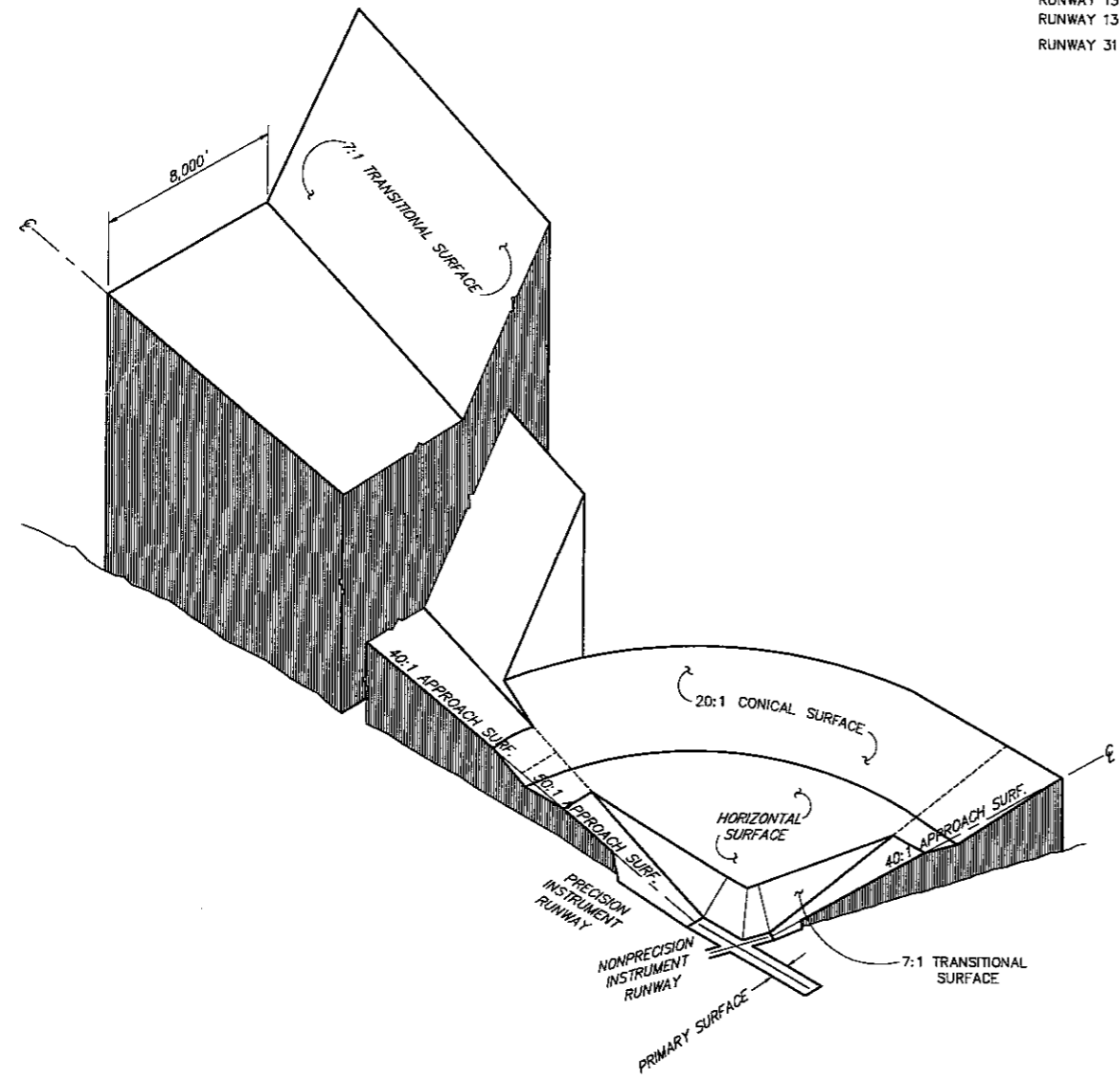
AIRPORT ZONING ORDINANCE
LANDUSE ZONING MAP

KREF: V:\proj\21_2003_12_09\cm\11455_Ven\hmg2007\Var\zoning.dwg

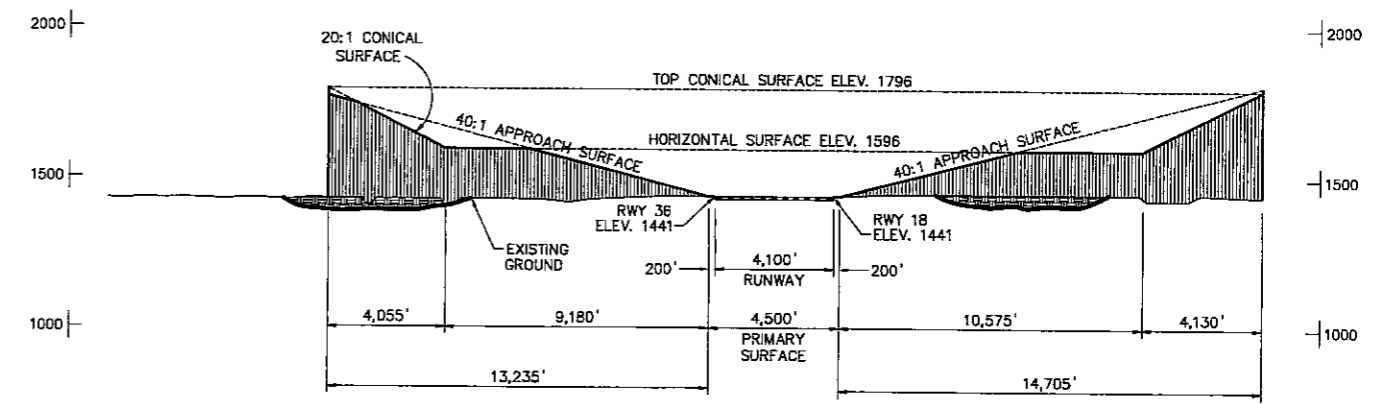


SECTION RUNWAY 13 - 31

RUNWAY 13 EXISTING END STA. 73+00
 RUNWAY 13 PLANNED END STA. 83+00
 RUNWAY 31 EXISTING AND PLANNED END STA. 18+00



PERSPECTIVE VIEW



SECTION RUNWAY 18 - 36

RUNWAY 18 EXISTING END STA. 139+50
 RUNWAY 18 PLANNED END STA. 148+00
 RUNWAY 36 EXISTING END STA. 109+17
 RUNWAY 36 PLANNED END STA. 107+00

PARK RAPIDS MUNICIPAL AIRPORT
 PARK RAPIDS, MINNESOTA

**AIRPORT ZONING ORDINANCE
 AIRSPACE SECTIONS**

THE CITY OF

TKDA

Sheet

XREF: NT: Jan 23, 2008 - 12:59pm
 V:\Varkapla\11450\A\11450.dwg